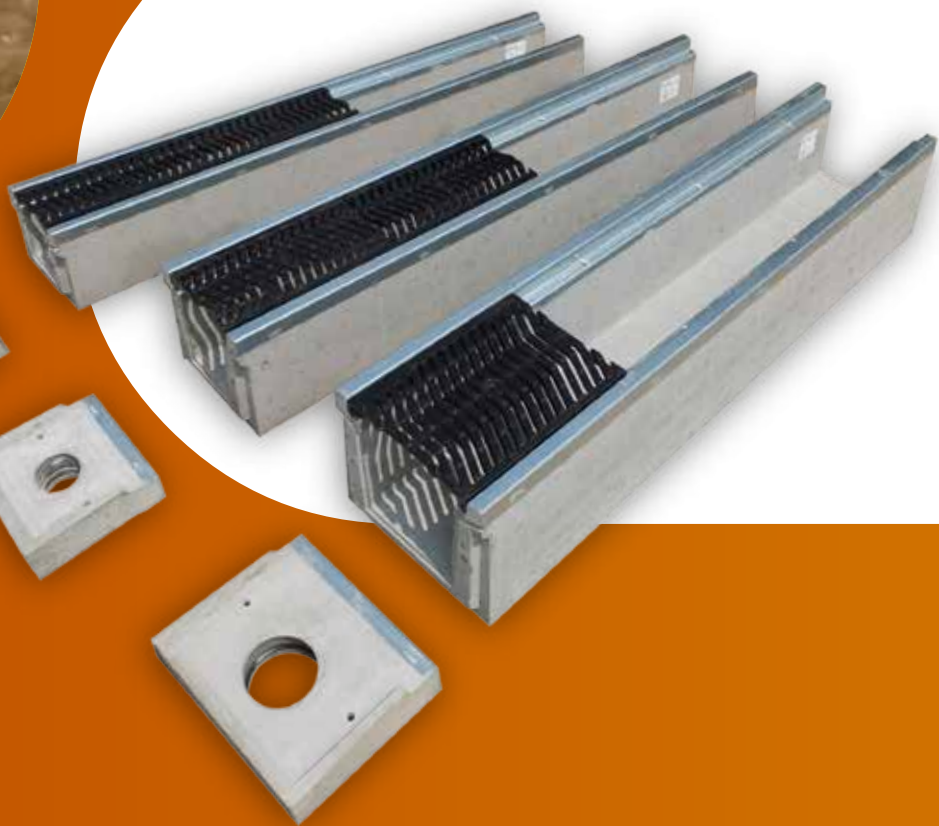


**DRAINAGE
CHANNELS
TYPE I**



DRAINAGE CHANNELS

TYPE I

Norm: EN1433

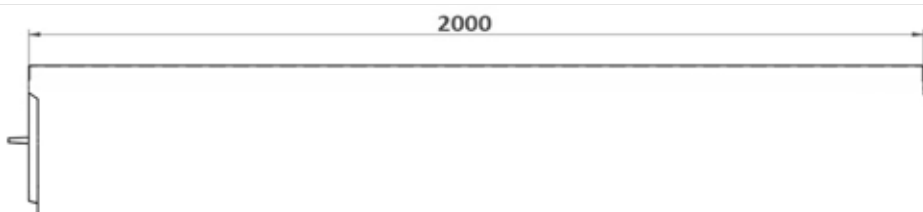
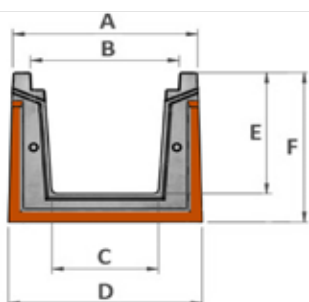
Cover: Cast iron acc. EN1433. Classe D

Description: Drainage channels "Type I" for the collection and conveyance of surface water from roads (incl. pedestrian streets), hard shoulders and parking areas, for all types of road vehicles.



16

Installation instructions and terms of delivery on request.

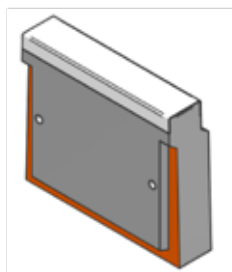


Cast iron cover according EN1433

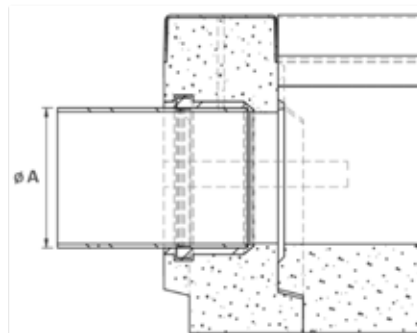
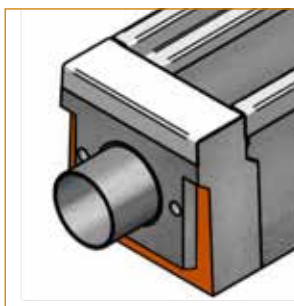
	MODEL 180	MODEL 250	MODEL 300
A (mm)	248	318	413
B (mm)	180	234	325
C (mm)	106	143	238
D (mm)	268	338	433
E (mm)	180	250	300
F (mm)	250	320	370
Hydr. Section (cm ²)	170	330	660
Weight (kg)	200	300	370

ENDCAP

BLANC ENDCAP



ENDCAP WITH ADAPTER



	MODEL 180	MODEL 250	MODEL 300
ØA TUBE (mm)	110	110	110
		160	160